



# Assistive Technology



# Smart homes

Smart homes with assistive technology provide older and disabled Australians with greater independence, safety, and peace of mind.

The term 'smart home' refers to a set of systems in which devices and appliances can be controlled remotely, via connection to the internet and allows the user to control and function the devices which communicate with one another. These include devices such as thermostats, lights, security systems and much more, all via mobile phone or any other networked device.

'Assistive technology' (AT) is any item, piece of equipment, software program, or product system that is used to increase, maintain, or improve the functional capabilities of elderly people and people with disabilities. AT can be low-tech (i.e. communication boards made of cardboard or fuzzy felt) or high-tech (i.e. electronic devices, wheelchairs, walkers, educational software, power lifts, pencil holders, eye-gaze and head trackers).

Having shifted from a nice-to-have to a necessity, for those who live with accessibility challenges, smart home AT can be a powerful enabler that allows them to live a more independent and empowered life. Smart plugs, smart lighting, smart security, smart speakers, smart thermostats, smart window shades, smart garage door openers, smart health monitoring – the possibilities are limitless. In the near future, smart homes and assistive technology will take care of you rather than you taking care of your home.

This rapidly growing assistive technology industry is continually developing tailored solutions to integrate existing and new technology into people's lives where the intention is to provide safety, independence, comfort, reassurance, and peace of mind for the people using it and their families.

Additionally, older people have progressively become more comfortable with technology like video-chat, smartphones, iPads and smart TVs. This trend has been ongoing, but the recent COVID-19 pandemic has helped expose everyone to the benefits and possibilities that come with technology, and many seniors have discovered how simple smart home technology can be, especially when leveraging voice activation functions.





CARETEQ is an Australian company with a focus on delivering health and aged care technology solutions for a global audience. GMH Solutions is a CARETEQ Preferred Partner for the SOFIHUB range of solutions which includes:

### SOFIHUB

SOFIHUB is a cloud-based data capture tool and user interface that seamlessly integrates with SOFIHUB hardware including TEQ-Home, TEQ-Secure and Eazense, to provide users, their carers and family with an out-of-the-box solution and peace of mind. SOFIHUB can be accessed through computers, laptops, tablets, and smartphone apps.



### TEQ-Home

TEQ-Home is an ambient, assisted-living smart technology, designed to promote the well-being and independence of the world's aging and disabled population. TEQ-Home utilises non-invasive motion sensors to detect anomalies in routines and alert family and carers when help is needed. Powered by SOFIHUB, it can also provide fall detection, time-based messages and medication reminders, and occupancy based messages to help users with their daily lives.



### TEQ-Secure

TEQ-Secure is a 3G/4G GPS-enabled safety wearable pendant that provides two-way voice communication, live fall detection, spoken reminders, and SOS alerts to multiple emergency contacts. It also provides live location monitoring and uses geofencing technology to alert carers and family when the wearer ranges beyond the perimeter. Powered by SOFIHUB, it is ideal for people and their carers who seek peace of mind, or avid adventurers looking for safety that goes beyond traditional location beacon solutions.



### Eazense

Powered by SOFIHUB, Eazense employs radar technology with AI to provide continuous non-invasive monitoring, allowing care resources to be managed efficiently and emergency responses to be initiated in a timely manner. This passive solution doesn't require the patient to wear or do anything and can monitor a range of events including fall detection, movement patterns or if anyone else is in the room. Where anomalies are detected, carers receive notifications via the SOFIHUB portal, allowing for an immediate response.



# TEQ-Home

TEQ-Home an ambient, assisted-living technology, designed to promote the well-being and independence of the world's aging population using smart technology.

Utilizing non-invasive motion sensors to detect anomalies in key routines, remotely and alerting carers and family when help is needed.



## WHAT IS INTELLIGENT MESSAGE?

**Time based messages:** Play at the specified time.

**Medication reminders:** A reminder message will play if the medicine cabinet is not accessed at the scheduled time.

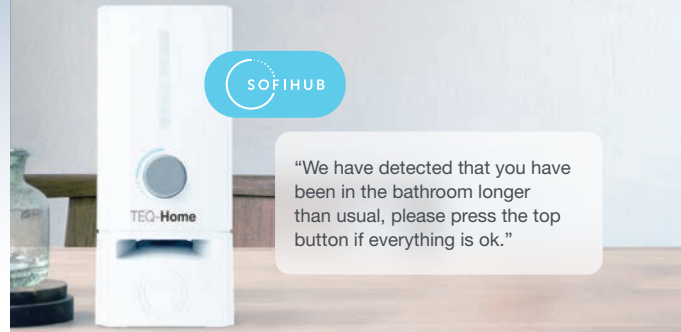
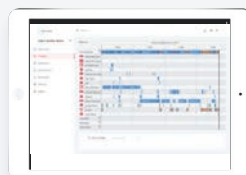
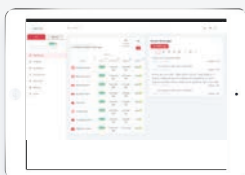
**Occupancy based messages:** If the room that the hub is located in is occupied between the start and the expiry times, the message will be played.

Features	Benefits
Portal – online access for TEQ-Home and TEQ-Secure	Real-time access for families and carers and notifications
Timeline reporting	View daily activities
Ability to enter reminders and add intelligent messages	Improvements to routine



## A UNIQUE, 'SMART' INFRASTRUCTURE

- **SOFIHUB** is a cloud based, state-of-the-art interface that provides security and real-time access for carers and other users of SOFIHUB's solutions
- The portal enables big data capture and enhanced granularity
- Constant real-time stream of multiple data variables delivering broad detail on activities and occurrences
- SOFIHUB can be accessed through various devices including computer, laptop, tablet and iOS and Android smartphone app
- Seamless integration with SOFIHUB hardware, providing users and loved ones an out-of-the-box solution



## INTELLIGENT SPOKEN WORD REMINDERS

<b>Greeting</b> <i>"Good morning..."</i>	<b>Medication</b> <i>"Time to take your 12 o'clock medication."</i>	<b>Doctor's Appointment</b> <i>"Don't forget, you have an appointment with Dr. Jones"</i>
---	--	--

TEQ-Home medication sensor knows when you forget to take your medication and gives you a gentle reminder.

**Bathroom**  
 TEQ-Home will send your carer/family member a notification if you are in the bathroom for longer than expected and that you might need some help.



# TEQ-Secure

TEQ-Secure is a lightweight, easy to use safety pendant that can issue an emergency request to multiple people at the touch of a button via SMS.

Equipped with global positioning and mobile network technology, it can instantly pinpoint a person's location and enable immediate voice contact via a built-in speaker phone.



## Falls Detection

When a fall is detected your TEQ-Secure sends an SMS to your nominated friend/family member and then follows up swiftly with a two-way voice call

## Real Time Live Location

See locations status via our online portal using a computer or iOS/Android smart phone app

## Geofencing

Select safe areas and if your loved one travels inside or outside these approved locations carers/friends/family are notified

## Spoken Word Reminders

The included charging cradle offers spoken word reminders to charge your TEQ-Secure when needed

## Two-Way Voice

Friends and family can call the device just like a normal cell phone and have a two-way voice conversation

## Emergency button, one touch call ability

Speedy access to emergency contacts

## Nationwide 4G connectivity

Assurance your call for help will be received where there is mobile coverage

## Waterproof (IP67)

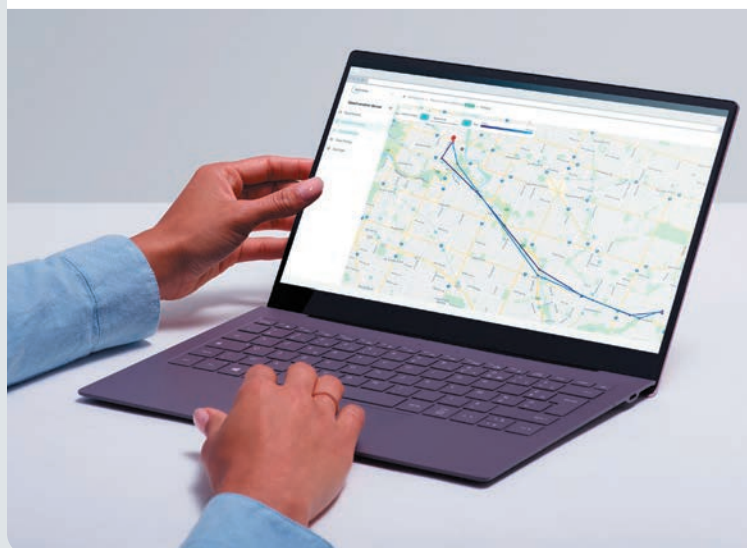
Can be worn in the shower



SOFIHUB is the web based, state of the art interface that provides access for users of SOFIHUB products and services to manage their systems.

Nominating carers or emergency contacts, naming your device, setting up falls detection sensitivity and geofence locations – the portal is there for all of this.

Accessible via traditional computer or iOS or Android smart phone app.





# eazense

## Falls detection with radar sensor technology

eazense, a passive monitoring system based on unique radar sensor technology with AI.

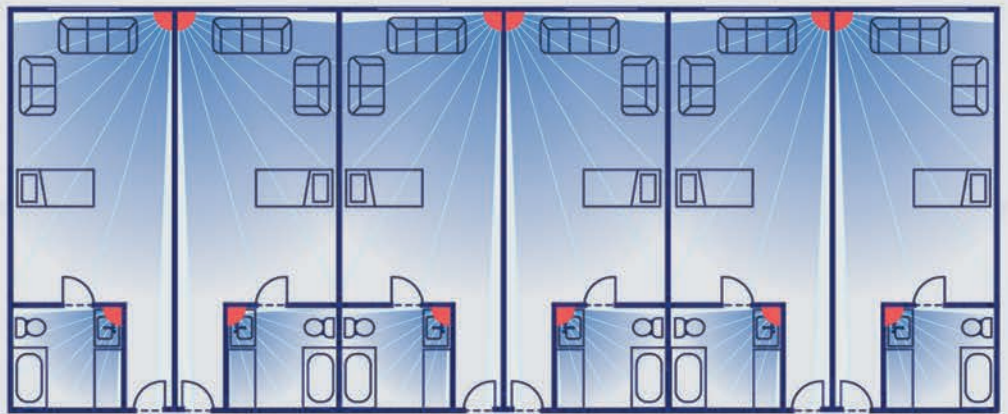
This ground-breaking radar sensor offers unique real time falls detection and presence detection across multiple occupants in a room.

eazense is designed to detect, record, and log activity in a room, and then notify if certain levels of activity are outside of a normal routine.

eazense is connected in real-time to the SOFIHUB portal, reporting all alerts in the form of notifications to caregivers.



INDEPENDENT LIVING



AGED CARE FACILITIES

Real time falls detection

Multi occupancy activity tracking

Respects privacy and does not use cameras

Fully automatic and contactless

Easy to install and operate

Operates without wearables



gmhsolutions.com.au

07 4000 4786

Ingenuity · Reliability · Integrity

